

Name: _____ **Date:** _____

Cut out the Sorting Cards. Can you match the crime to its time period, the way it was detected and how it was punished? Stick the cards in the correct places once you have worked it out.



Roman 43 - 410

Crime	Detection	Punishment

Saxon 410 - 1066

Crime	Detection	Punishment

Medieval 1066 - 1500

Crime	Detection	Punishment

Name: _____ Date: _____

Cut out the Sorting Cards. Can you match the crime to its time period, the way it was detected and how it was punished? Stick the cards in the correct places once you have worked it out.



Crime	Detection	Punishment
Roman 43 - 410		
Saxon 410 - 1066		
Medieval 1066 - 1500		

Write a sentence describing the type of crime, how it was detected and how it was punished for each time period:

Roman	
Saxon	
Medieval	

Name: _____ Date: _____

Cut out the Sorting Cards. Can you match the crime to its time period, the way it was detected and how it was punished? Stick the cards in the correct places once you have worked it out.



Crime	Detection	Punishment
Roman 43 - 410		
Saxon 410 - 1066		
Medieval 1066 - 1500		

How did the type of crime, the way crimes were detected or the type of punishment change over time? Write a paragraph using as much detail as you can:

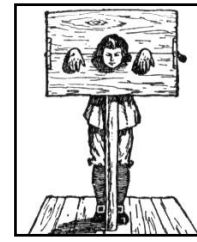
Rebelling against the Emperor



The tithing of 10 men would bring the perpetrator to court



A fine or time in the pillory



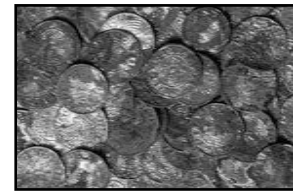
Selling underweight bread



Urban Cohort would stop riots and arrest ringleaders



Weregild was paid to the injured person



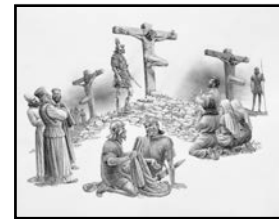
Attacking and injuring someone



Constables were appointed in each village who would check what people sold



Death by crucifixion



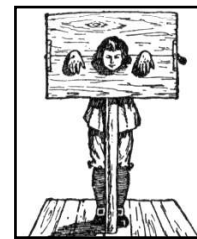
Rebelling against the Emperor



The tithing of 10 men would bring the perpetrator to court



A fine or time in the pillory



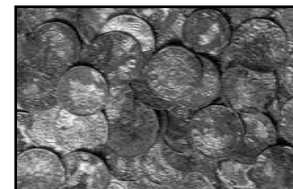
Selling underweight bread



Urban Cohort would stop riots and arrest ringleaders



Weregild was paid to the injured person



Attacking and injuring someone








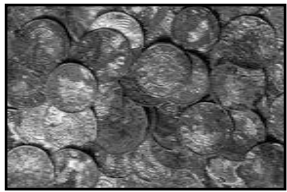
Constables were appointed in each village who would check what people sold



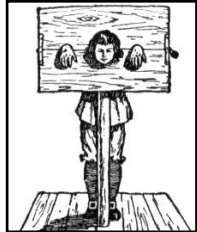


Death by crucifixion



Roman 43 - 410		
Crime	Detection	Punishment
Rebelling against the Emperor 	Urban Cohort would stop riots and arrest ringleaders 	Death by crucifixion 

Saxon 410 - 1066		
Crime	Detection	Punishment
Attacking and injuring someone 	The tithing of 10 men would bring the perpetrator to court 	Weregild was paid to the injured person 

Medieval 1066 - 1500		
Crime	Detection	Punishment
Selling underweight bread 	Constables were appointed in each village who would check what people sold 	A fine or time in the pillory 

Roman scenario

First of all, read this scenario through. Work out who will play all the roles and then act out the scene.

You are a Roman citizen living in a town. You return to your town-house to discover someone has broken in and stolen some of your expensive silver plates and glass flagons. Your slaves didn't see or hear anything.

You ask for help from your friends and you all go out to the local market to see if the thief has put your goods on sale. One of your friends sees something they recognise and seizes the stallholder. The stallholder is summoned to court for the hearing, presided over by a magistrate. They then also have to go to a second court with a judge agreed by both parties.

The stallholder is found not guilty when it appears s/he was sold the items by one of your slaves. You have your slave flogged.



Medieval scenario

First of all, read this scenario through. Work out who will play all the roles and then act out the scene.

You are a poor villager living inside a newly created royal forest. One of the king's forester's catches you gathering firewood in the forest without a licence and puts you in prison.

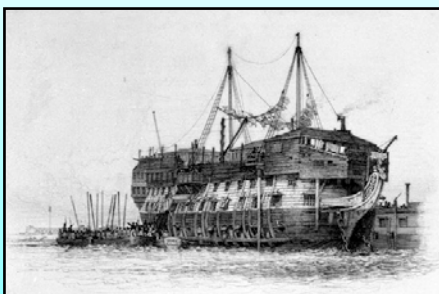
After about 2 months, during which time your family has been calling in favours with their friends to pay for your stay in the prison, the lord of the manor hears your case. You have to talk for yourself and the forester speaks against you.

The lord of the manor decides you are guilty but because you are not a landowner, you cannot be fined. The lord of the manor sentences you to have your right hand cut off. Your husband/wife pleads with the lord of the manor to spare you, as without a hand you wouldn't be able to feed your family. The lord of the manor agrees and lets you go.



Victorian scenario

First of all, read this scenario through. Work out who will play all the roles and then act out the scene.



You are a child who lives in a crowded house with your ten brothers and sisters. You don't have much to eat as your father is dead and your mother is ill and can't work. You go out and steal money from people's pockets.

You are caught by a policeman. You go to prison with lots of scary adults. You go to trial where the judge sentences you to be transported to Australia. Conditions on the ship are very cramped and dirty and it takes several month to get there.

When you're there you have to work very hard in the fields and building roads and houses.