

# Varied Fluency

## Step 3: Measure Mass (kg)

### National Curriculum Objectives:

Mathematics Year 2: (2M1) [Compare and order lengths, mass, volume/capacity and record the results using >, < and =](#)

Mathematics Year 2: (2M2) [Choose and use appropriate standard units to estimate and measure length/height in any direction \(m/cm\); mass \(kg/g\); temperature \( \$^{\circ}\$  C\); capacity \(litres/ml\) to the nearest appropriate unit, using rulers, scales, thermometers and measuring vessels](#)

### Differentiation:

**Developing** Questions to support measuring and comparing mass in kg including reading scales in increments of 10 with all increments marked on the scale.

**Expected** Questions to support measuring and comparing mass in kg including reading scales in increments of 2, 5 and 10, with most increments marked on the scale.

**Greater Depth** Questions to support measuring and comparing mass in kg including reading scales in increments of 2, 5 and 10 and not all increments are marked on the scale.

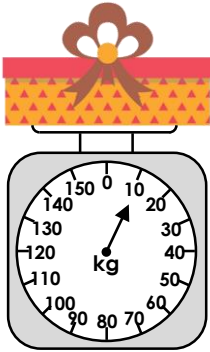
More [Year 2 Mass, Capacity and Temperature](#) resources.

Did you like this resource? Don't forget to [review](#) it on our website.

# Measure Mass (kg)

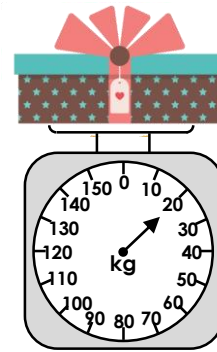
# Measure Mass (kg)

1a. What weight does the scale show?



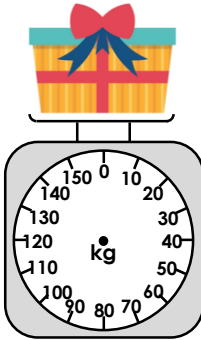
VF

1b. What weight does the scale show?



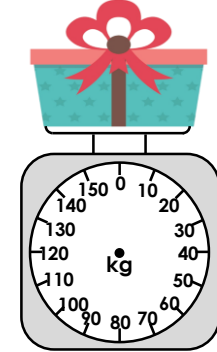
VF

2a. Add an arrow to the scale so that it shows 30kg.



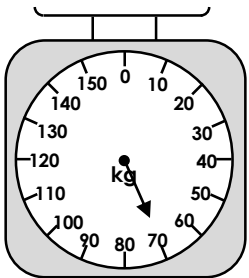
VF

2b. Add an arrow to the scale so that it shows 10kg.



VF

3a. Tick if the statement is true or false.



The scale reads heavier than 50g.

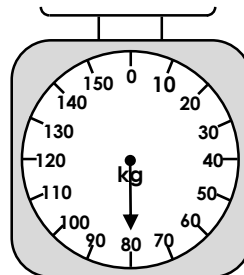

True

False



VF

3b. Tick if the statement is true or false.



The scale reads lighter than 90kg.


True

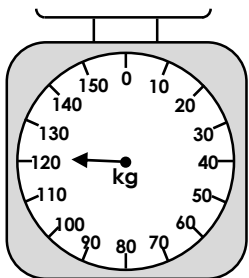
False



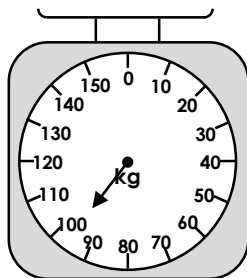
VF

4a. Circle the scale that shows 10kg more than 110kg.

A



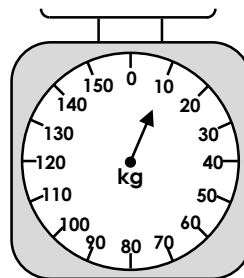
B



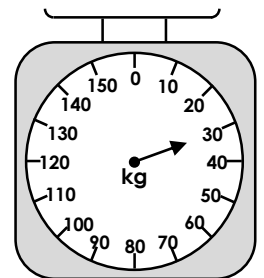
VF

4b. Circle the scale that shows 10kg less than 40kg.

A



B

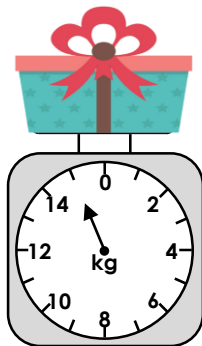


VF

# Measure Mass (kg)

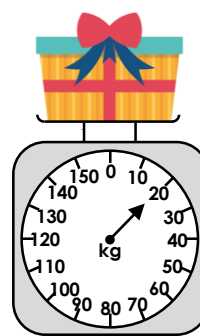
# Measure Mass (kg)

5a. What weight does the scale show?



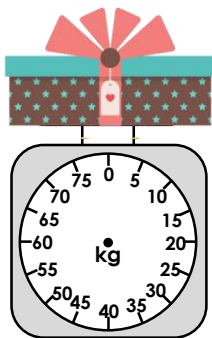
VF

5b. What weight does the scale show?



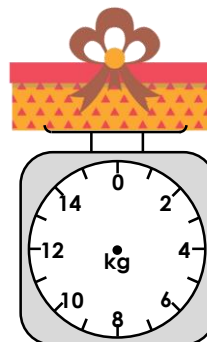
VF

6a. Add an arrow to the scale so that it shows 65kg.



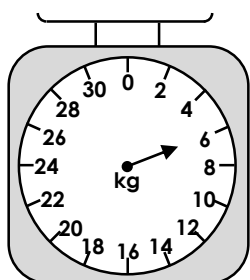
VF

6b. Add an arrow to the scale so that it shows 11kg.



VF

7a. Tick if the statement is true or false.



The scale reads lighter than 6kg.

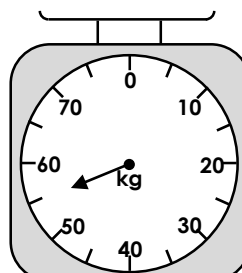

True

False



VF

7b. Tick if the statement is true or false.



The scale reads 55 kg.


True

False

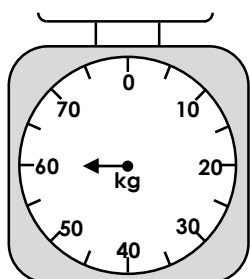
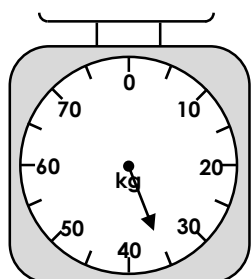


VF

8a. Circle the scale that shows 5kg less than 65kg.

A

B

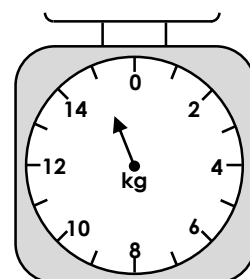
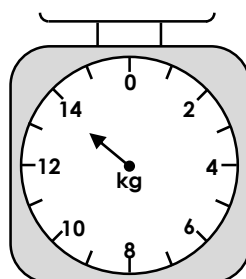


VF

8b. Circle the scale that shows 2kg more than 13kg.

A

B

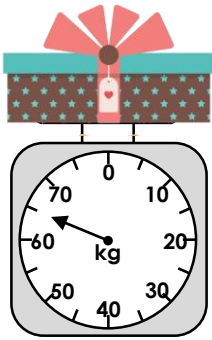


VF

# Measure Mass (kg)

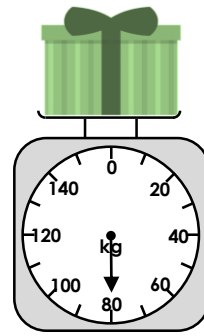
# Measure Mass (kg)

9a. What weight does the scale show?



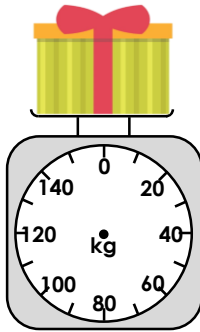
VF

9b. What weight does the scale show?



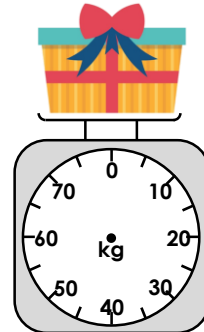
VF

10a. Add an arrow to the scale so that it shows 90kg.



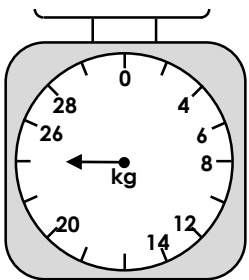
VF

10b. Add an arrow to the scale so that it shows 55kg.



VF

11a. Tick if the statement is true or false.



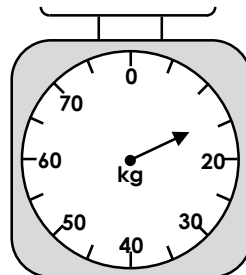
The scale reads 25kg.

<input type="checkbox"/>	True
<input type="checkbox"/>	False



VF

11b. Tick if the statement is true or false.



The scale reads 19 kg.

<input type="checkbox"/>	True
<input type="checkbox"/>	False

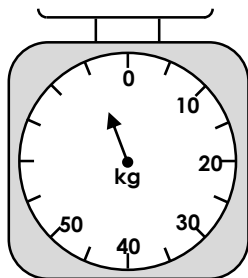
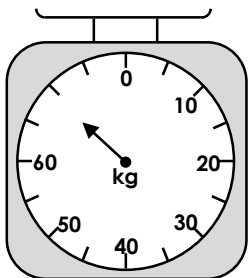


VF

12a. Circle the scale that shows 10kg less than 80kg.

A

B

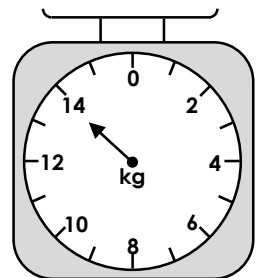
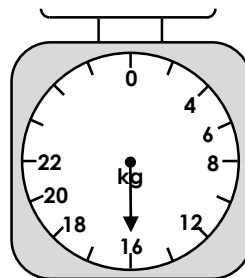


VF

12b. Circle the scale that shows 2kg more than 12kg.

A

B



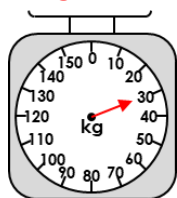
VF

## Varied Fluency Measure Mass (kg)

### Developing

1a. **10kg**

2a.



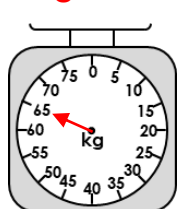
3a. **True**

4a. **A**

### Expected

5a. **15kg**

6a.



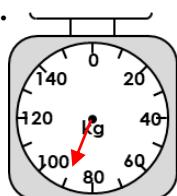
7a. **False**

8a. **B**

### Greater Depth

9a. **65kg**

10a.



11a. **False**

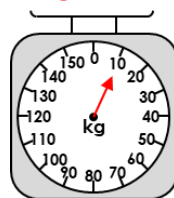
12a. **A**

## Varied Fluency Measure Mass (kg)

### Developing

1b. **20kg**

2b.



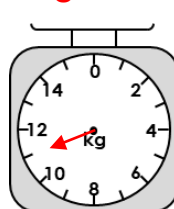
3b. **True**

4b. **B**

### Expected

5b. **20kg**

6b.



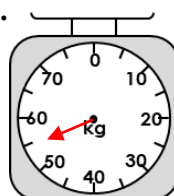
7b. **True**

8b. **B**

### Greater Depth

9b. **80kg**

10b.



11b. **False**

12b. **B**