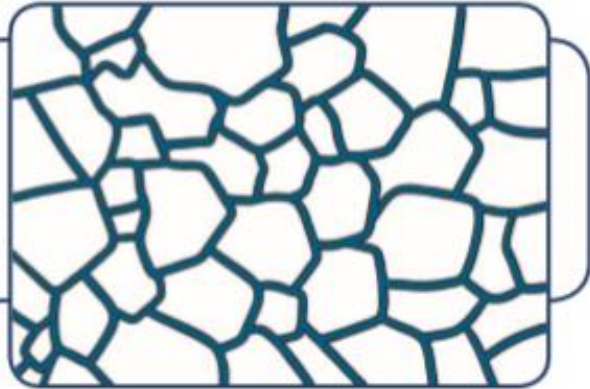


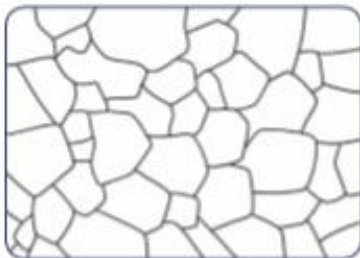
Antarctic Collage

You will need:

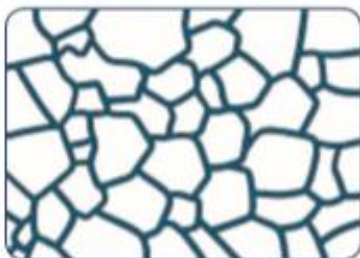
- A3 blue paper (1 page per child)
- A4 white paper (1 page per child)
- Scissors
- Glue sticks



1. Start with the A4 page of white paper.
2. Use scissors to cut the paper into irregular shapes, like this:



3. These shapes are now your pieces of ice.
4. Place the ice shapes over your blue paper (the sea).
5. Move your ice shapes apart so that there is space between them.
6. Stick your ice shapes in place over the sea, like this:



7. You could add Antarctic animals to your scene.