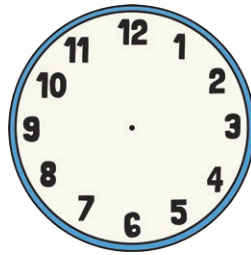
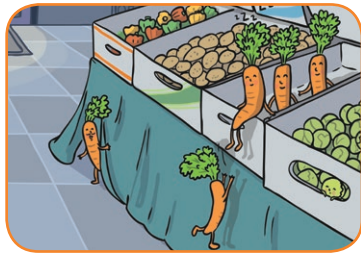
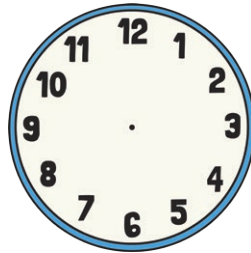
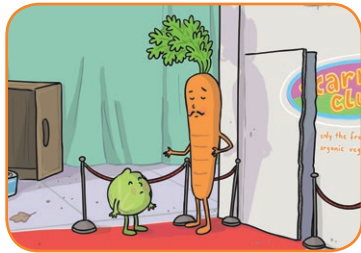


Carrot Club Time Challenge

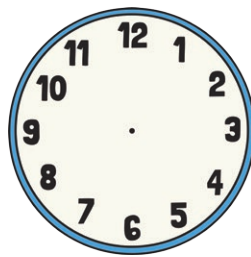
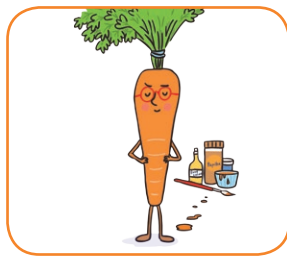
Draw the hands on the clocks to show what time the veggies did each activity.



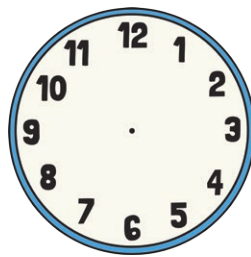
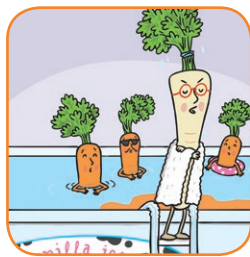
At **10 o'clock**, the carrots crept into the club.



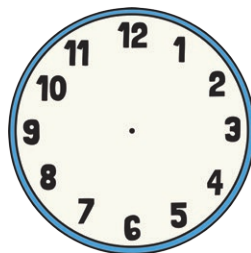
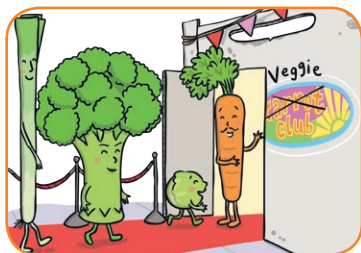
At **half past 11**, Sally Sprout tried to get into the club.



At **12 o'clock**, Polly Parsnip painted herself orange.



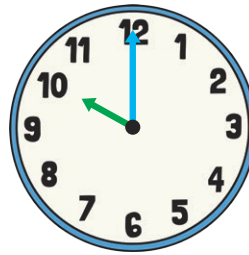
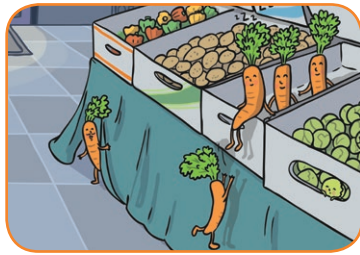
At **half past 1**, Polly was found out!



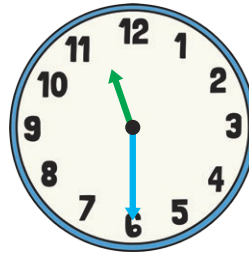
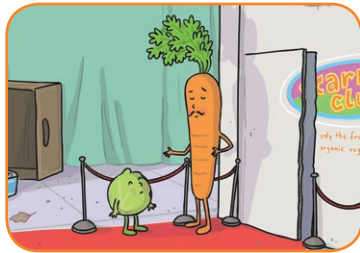
At **2 o'clock**, the other veggies were allowed into the club.

Carrot Club Time Challenge Answers

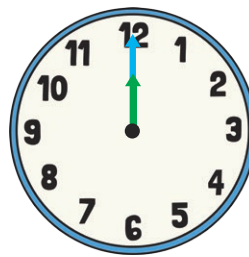
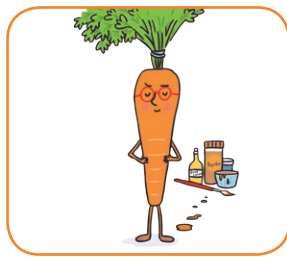
Draw the hands on the clocks to show what time the veggies did each activity.



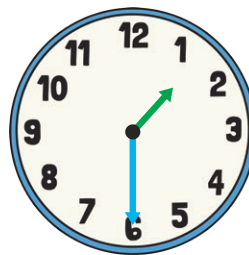
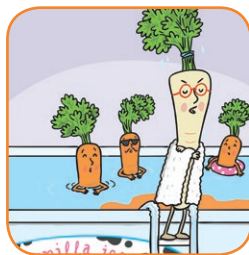
At **10 o'clock**, the carrots crept into the club.



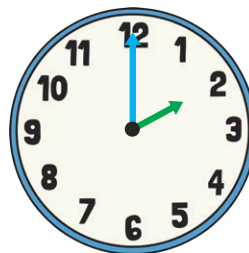
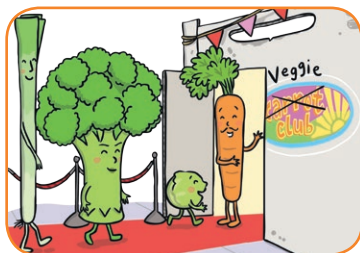
At **half past 11**, Sally Sprout tried to get into the club.



At **12 o'clock**, Polly Parsnip painted herself orange.



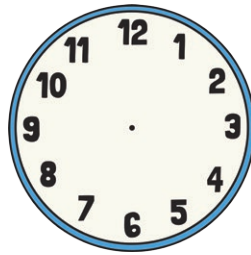
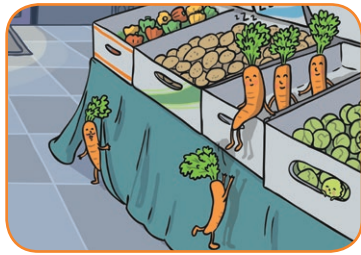
At **half past 1**, Polly was found out!



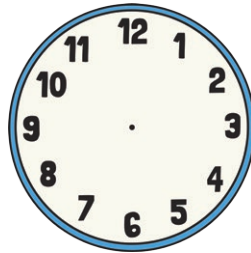
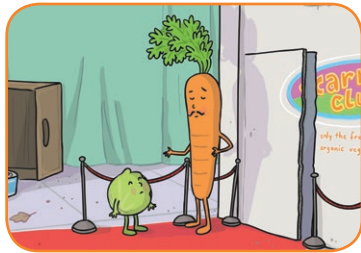
At **2 o'clock**, the other veggies were allowed into the club.

Carrot Club Time Challenge

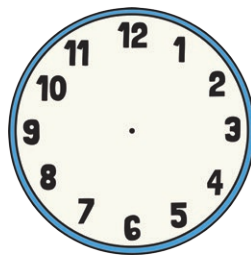
Draw the hands on the clocks to show what time the veggies did each activity.



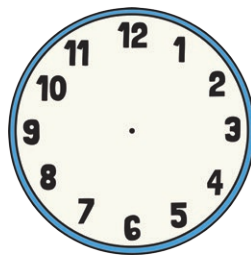
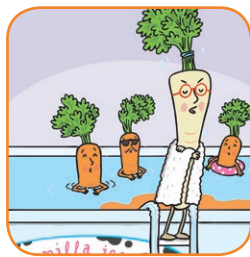
At **half past 10**, the carrots crept into the club.



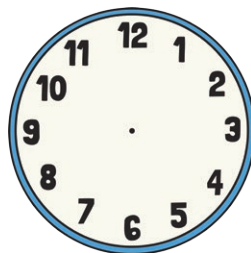
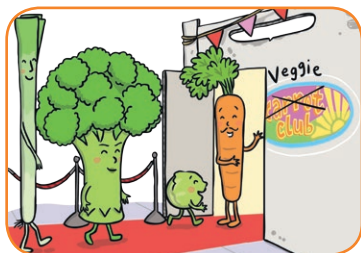
At **quarter past 11**, Sally Sprout tried to get into the club.



At **quarter to 12**, Polly Parsnip painted herself orange.



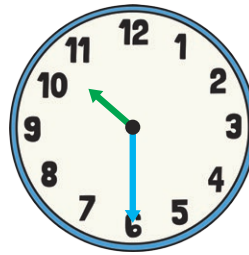
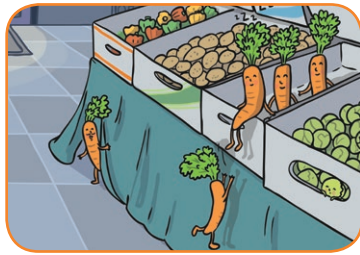
At **half past 1**, Polly was found out!



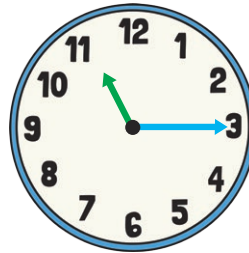
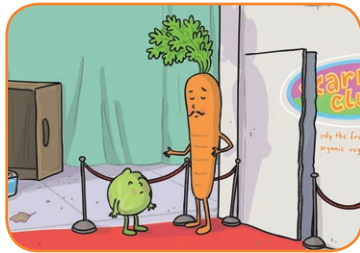
At **quarter past 2**, the other vegetables were allowed into the club.

Carrot Club Time Challenge Answers

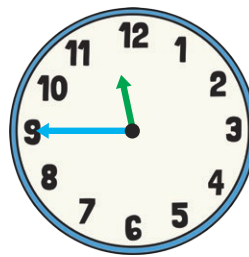
Draw the hands on the clocks to show what time the veggies did each activity.



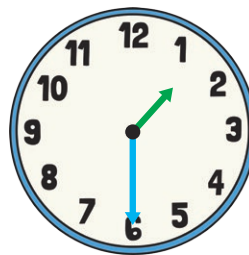
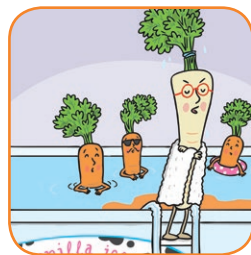
At **half past 10**, the carrots crept into the club.



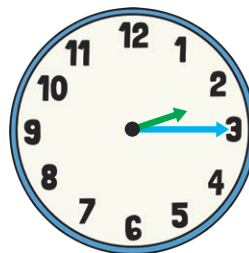
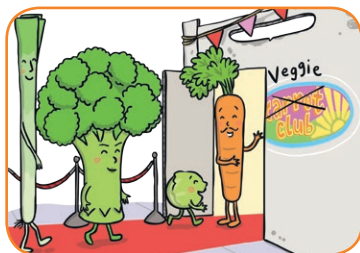
At **quarter past 11**, Sally Sprout tried to get into the club.



At **quarter to 12**, Polly Parsnip painted herself orange.



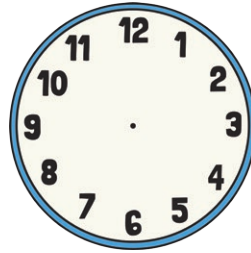
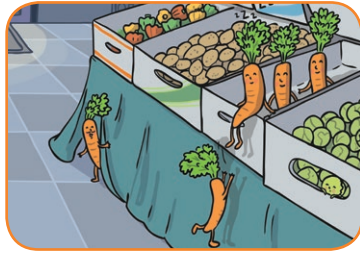
At **half past 1**, Polly was found out!



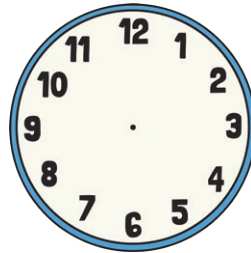
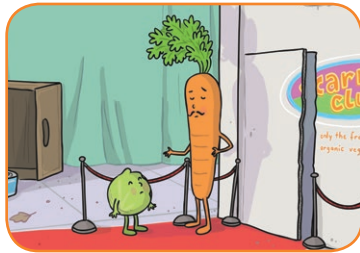
At **quarter past 2**, the other vegetables were allowed into the club.

Carrot Club Time Challenge

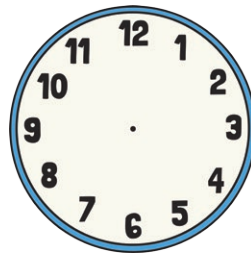
Draw the hands on the clocks to show what time the veggies did each activity.



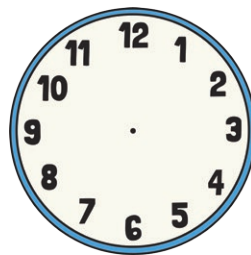
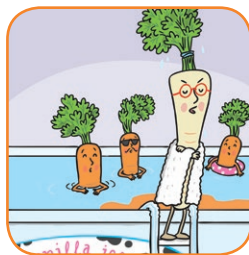
At **quarter to 10**, the carrots crept into the club.



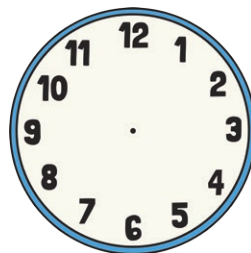
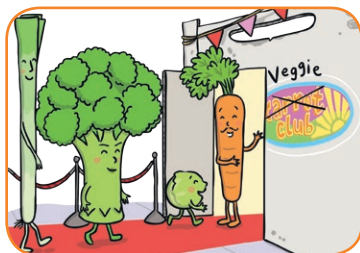
At **ten minutes past 11**, Sally Sprout tried to get into the club.



At **20 minutes to 12**, Polly Parsnip painted herself orange.



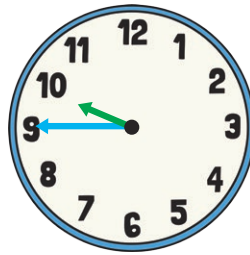
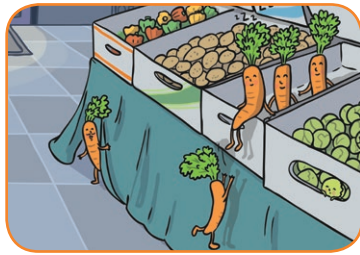
At **25 minutes past 1**, Polly was found out!



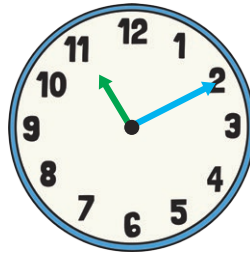
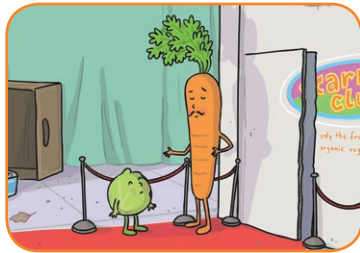
At **5 minutes to 2**, the other vegetables were allowed into the club.

Carrot Club Time Challenge Answers

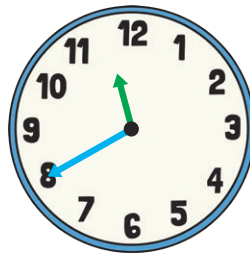
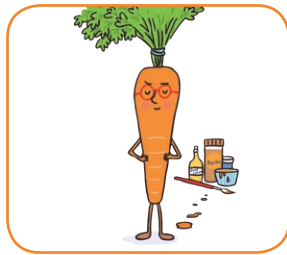
Draw the hands on the clocks to show what time the veggies did each activity.



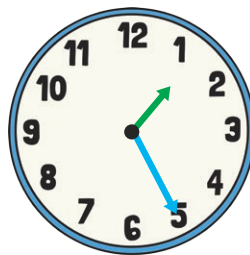
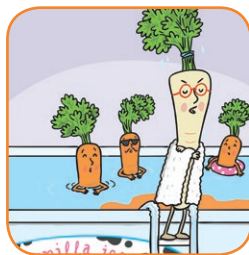
At **quarter to 10**, the carrots crept into the club.



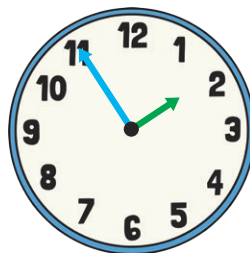
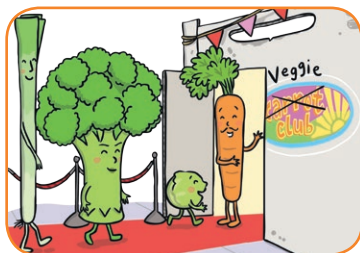
At **ten minutes past 11**, Sally Sprout tried to get into the club.



At **20 minutes to 12**, Polly Parsnip painted herself orange.



At **25 minutes past 1**, Polly was found out!



At **5 minutes to 2**, the other vegetables were allowed into the club.