

Varied Fluency

Step 3: Compare Mass

National Curriculum Objectives:

Mathematics Year 3: (3M1b) [Compare mass \(kg/g\)](#)

Differentiation:

Developing Questions to support comparing the mass of two objects. Using the same unit of measure g or kg in multiples of 1 and 10. Using heavier or lighter to compare.

Expected Questions to support comparing mass of two objects. Using some mixed units of measure, kg and g, in multiples of 1 and 5. Using heavier and lighter and the inequality symbols $<$, $>$ to compare.

Greater Depth Questions to support comparing the mass of two objects. Using all mixed units of measure, kg and g, in multiples of 1 and 5, with some presented as fractions. Using heavier, lighter and equal to, and the inequality symbols $<$, $>$ and $=$ to compare.

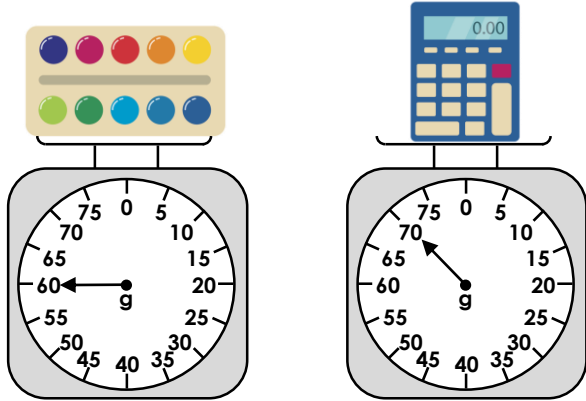
More [Year 3 Mass and Capacity](#) resources.

Did you like this resource? Don't forget to [review](#) it on our website.

Compare Mass

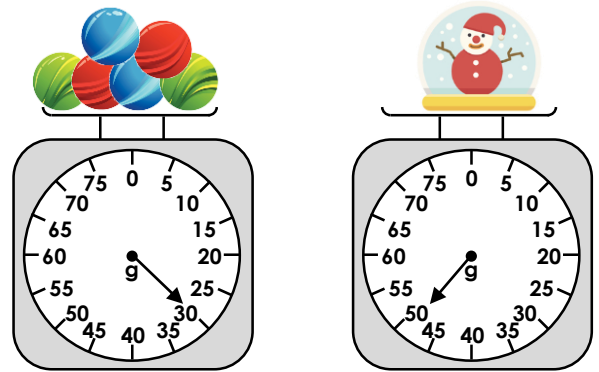
Compare Mass

1a. True or false? The calculator is heavier than the paints.



VF

1b. True or false? The marbles are lighter than the snow globe.



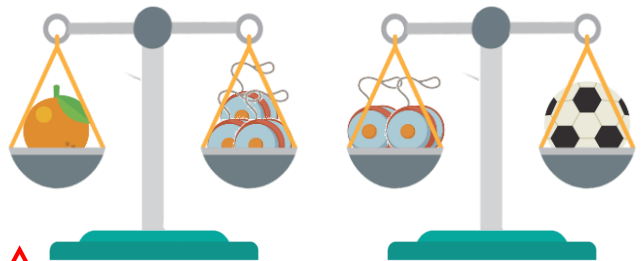
VF

2a. Which object is the heaviest if one strawberry weighs 10g?



VF

2b. Which object is the heaviest if one yoyo weighs 20g?



VF

3a. Use < or > to compare the weights.

30g 50g



VF

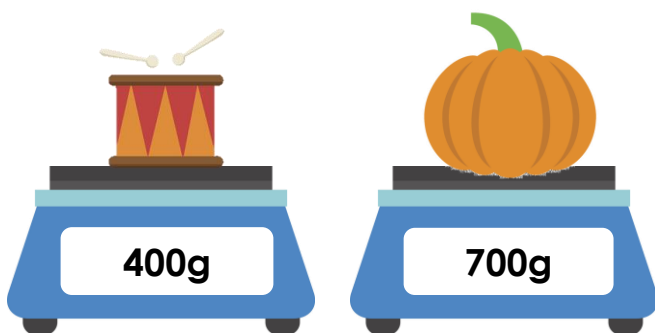
3b. Use < or > to compare the weights.

12g 21g



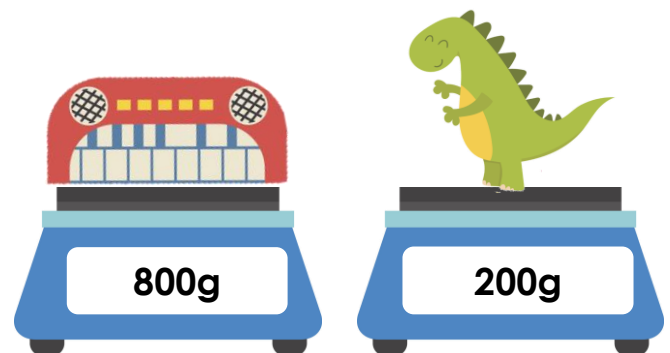
VF

4a. Which is lighter?



VF

4b. Which is heavier?

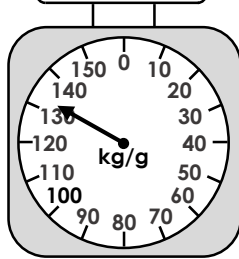
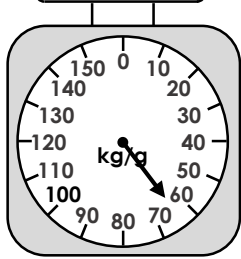
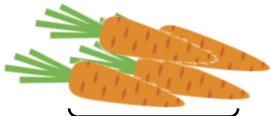


VF

Compare Mass

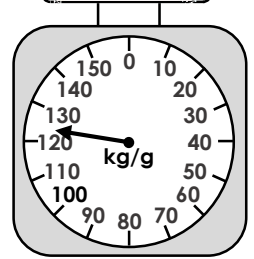
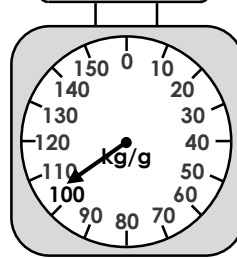
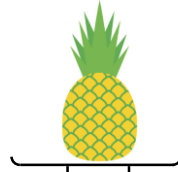
Compare Mass

5a. True or false? The carrots are heavier than the keyboard.



VF

5b. True or false? The drum is lighter than the pineapple.



VF

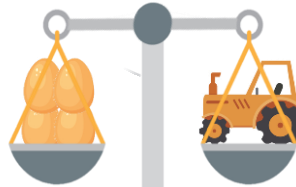
6a. Which object is the heaviest if one orange weighs 65g?



VF



6b. Which object is the lightest if one egg weighs 55g?



VF



7a. Use < or > to compare the weights.

555g 5kg



VF

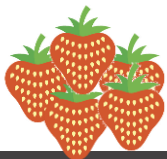
7b. Use < or > to compare the weights.

2kg 225g



VF

8a. Which is lighter?



25g



1kg



VF

8b. Which is heavier?



75g



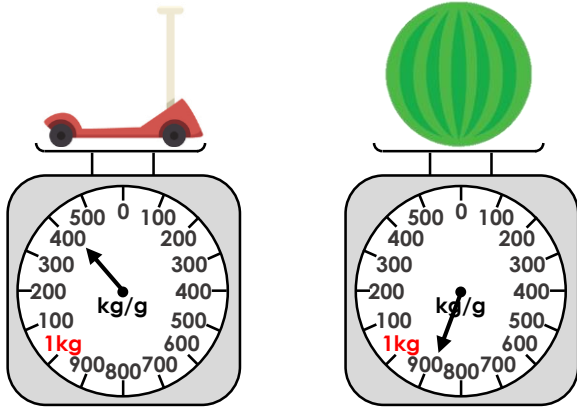
500g



VF

Compare Mass

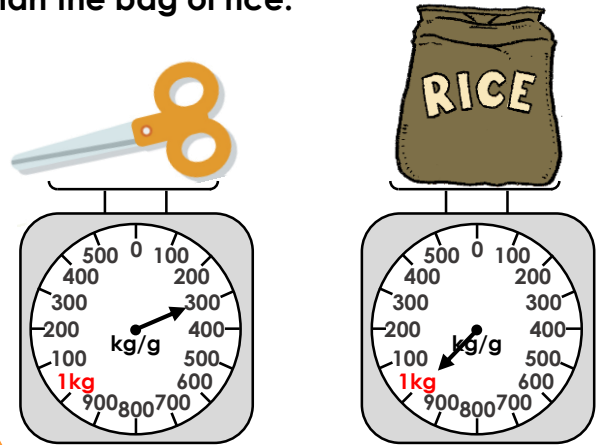
9a. True or false? The scooter is heavier than the watermelon.



VF

Compare Mass

9b. True or false? The scissors are lighter than the bag of rice.



VF

10a. Which object is the heaviest if one dinosaur weighs 1kg?



VF

10b. Which object is the lightest if one duck weighs 500g?



VF

11a. Use < or > to compare the weights.

3kg 500g 10kg



VF

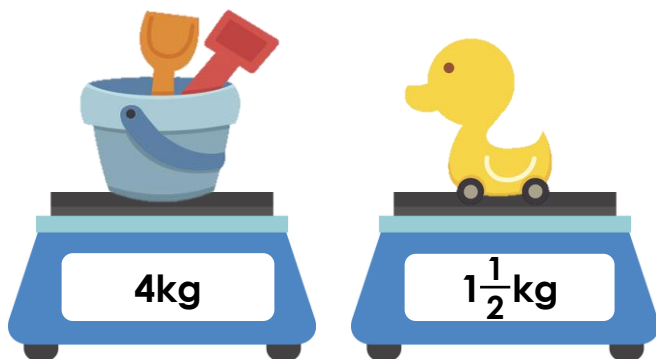
11b. Use < or > to compare the weights.

30kg $45\frac{1}{2}$ kg



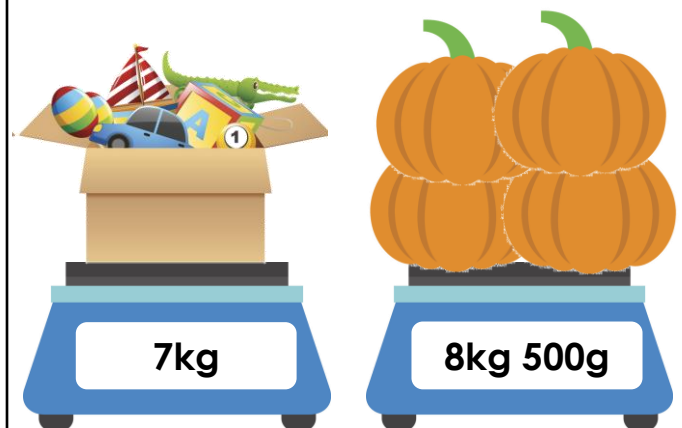
VF

12a. Which is lighter?



VF

12b. Which is heavier?



VF

Varied Fluency
Compare Mass

Developing

- 1a. **True**
- 2a. **Egg**
- 3a. **<**
- 4a. **Drum**

Expected

- 5a. **False**
- 6a. **Dinosaur**
- 7a. **<**
- 8a. **Strawberries**

Greater Depth

- 9a. **True**
- 10a. **Drum**
- 11a. **<**
- 12a. **Duck**

Varied Fluency
Compare Mass

Developing

- 1b. **True**
- 2b. **Orange**
- 3b. **<**
- 4b. **Keyboard**

Expected

- 5b. **False**
- 6b. **Banana**
- 7b. **>**
- 8b. **Tractor**

Greater Depth

- 9b. **True**
- 10b. **Watermelon**
- 11b. **<**
- 12b. **Pumpkins**